

*Explore*

# WEST MARIN



**FOOD ★ FARMS**  
**FUN ★ FAMILY**

**malt.**  
MARIN AGRICULTURAL  
LAND TRUST





*Welcome to*  
**WEST**  
**MARIN**





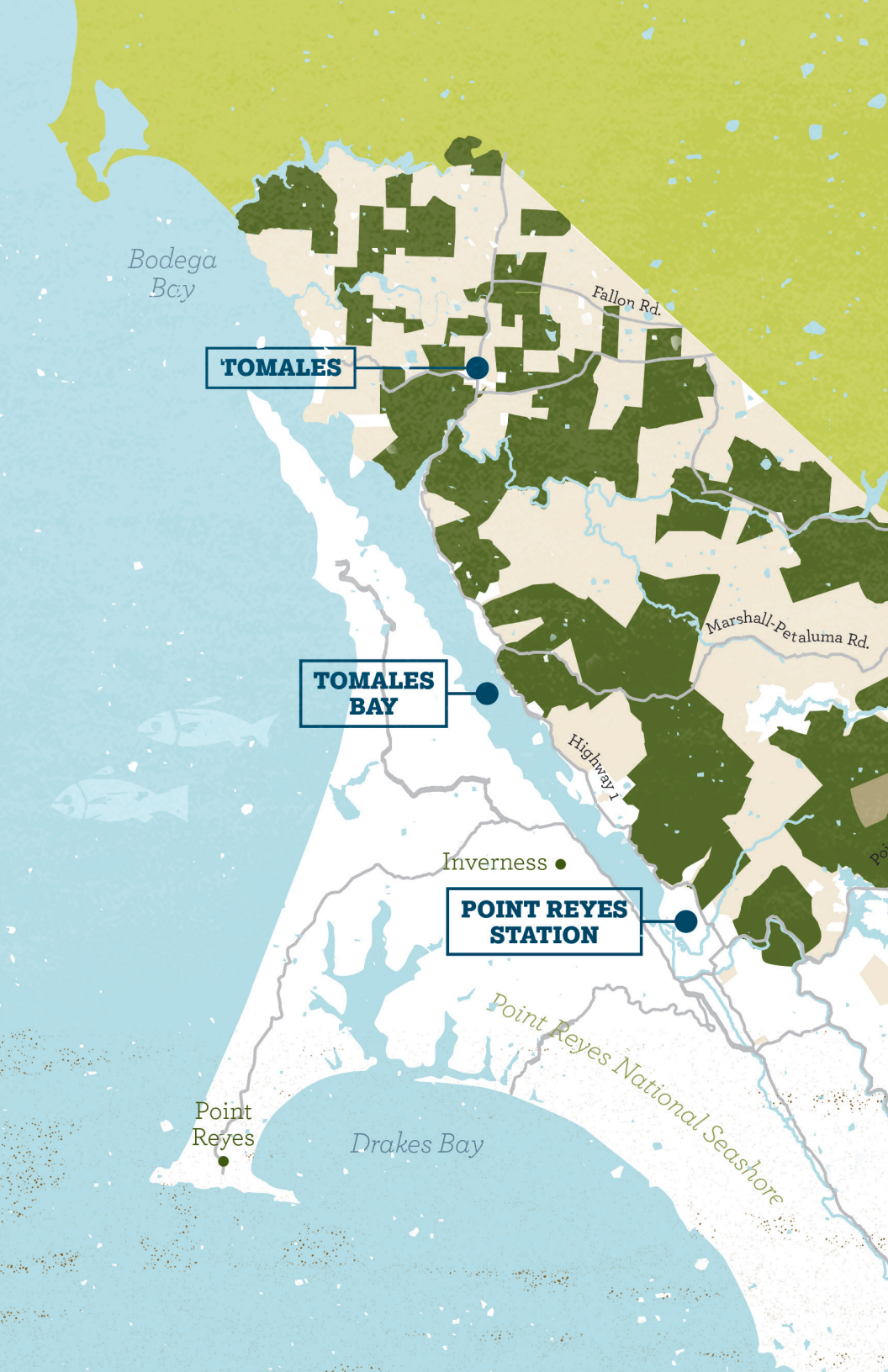
**There's something special about the West Marin landscape, a natural fusion of iconic ingredients melding to form one of the most spectacular regions in the American West.**

From its stunning natural beauty, rich agricultural heritage, world-class local foods, and unrivaled recreational opportunities, there's so much to see, taste, and explore.

Since 1980, the Marin Agricultural Land Trust (MALT) has worked to protect this landscape. Founded through an unlikely partnership between the environmental and ranching communities, we are the product of a cooperative spirit and innovative thinking. To date, we have conserved more than 58,500 acres of agricultural land, collectively one of the largest conservation areas in the Bay Area.

This guide is your invitation to experience West Marin more deeply and the landscape we have all worked to protect. Organized by geographic area, it's your go-to guide for your next trip west.

**HAPPY TRAILS!**



*Bodega Bay*

*Fallon Rd.*

**TOMALES**

*Marshall-Petaluma Rd.*

**TOMALES BAY**

*Highway 1*

*Inverness*

**POINT REYES STATION**

*Point Reyes*

*Drakes Bay*

*Point Reyes National Seashore*

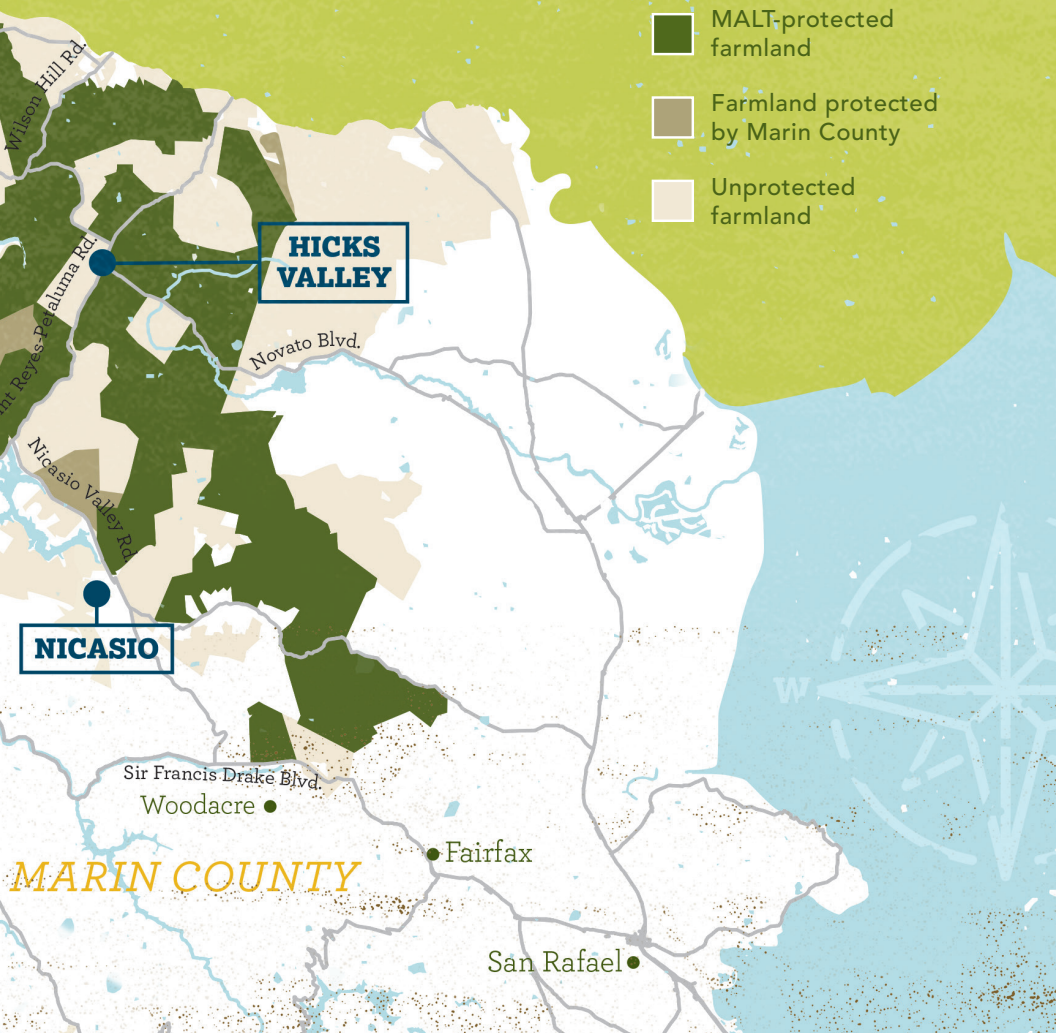


# 5

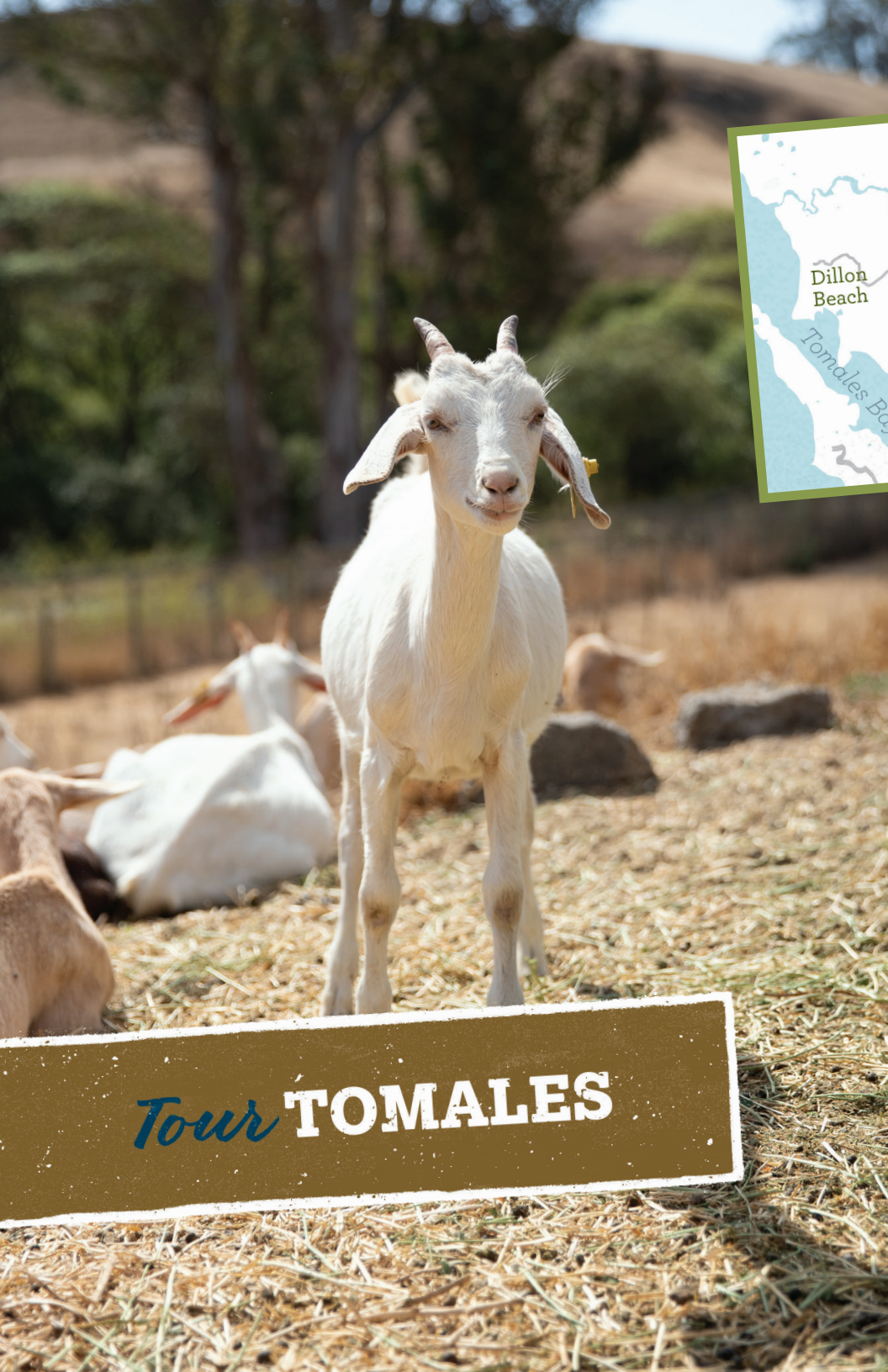
# WEST MARIN

## *must-do daytrips*

*Since 1980, MALT HAS WORKED TO PROTECT FARMLAND IN MARIN COUNTY—THE BACKDROP FOR YOUR NEXT ADVENTURE.*

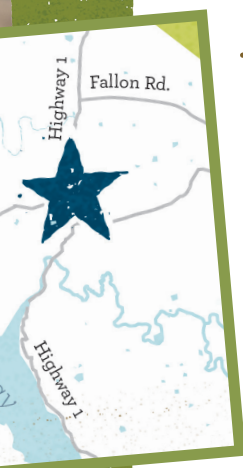






*Tour* **TOMALES**





*Tomales* SITS WITHIN A UNIQUELY RURAL CORNER OF MARIN COUNTY. SURROUNDED BY THOUSANDS OF ACRES OF MALT-PROTECTED FARMS AND RANCHES, THERE IS A STRONG SENSE OF SOLITUDE AND PEACEFULNESS—IT'S WHY PEOPLE LOVE IT.



The **Route One Bakery** is a must-stop for breakfast pastries or for their mouth-wateringly delicious pizzas. Antique treasures await across the street at the **Two Silos Mercantile**, located above the **general store**. Fuel up on small town charm at the **Tomales Deli & Cafe**, for the outdoor adventures nearby.



Just outside of town, MALT-protected **Toluma Farms**, home of Tomales Farmstead Creamery, holds tours (first Sunday of each month) of their farm, goat dairy, and creamery—it could be your chance to cuddle a baby goat. And **True Grass Farms**, across the road, offers local flavors at their farm stand and camping via **Hipcamp**, if you're looking for a weekend under the stars.



Not far is the cold saltwater and sweeping vistas of the dog-friendly **Dillon Beach**. When the **tide is low**, you can explore great tidepools at the north end of the beach.

**LOOKING FOR MORE DOG-FRIENDLY BEACHES?**

Start here: [malt.org/dog-beaches](http://malt.org/dog-beaches)





## Explore POINT REYES STATION

*Point Reyes Station, SOME MIGHT SAY, IS THE UNOFFICIAL CAPITAL OF WEST MARIN. A QUINTESSENTIAL WESTERN TOWN WITH AN AUTHENTIC VIBE, RICH INDIGENOUS HISTORY, AND A VIBRANT COMMUNITY DEDICATED TO SUSTAINABLE LIVING.*



Jump start your day with a stop at **Bovine Bakery** or **Brickmaiden Breads**, both are close to the exceptionally well-tailored **Point Reyes Books** and the local flavors and textiles of the **West Marin Culture Shop**. From the juicy burgers at the **Station House Cafe**, wood-fired pizzas at **Cafe Reyes**, and locally-sourced bites from **Side Street Kitchen**, there's a ton of good food for a town this size—not surprising given the number of nearby MALT-protected farms and ranches.







# *Taste of* **TOMALES BAY**

---

*Tomales Bay's* **EASTERN SHORE ENCOMPASSES MORE THAN 11,000 ACRES OF MALT-PROTECTED LAND, ONE OF THE LARGEST WILDLIFE CORRIDORS IN THE BAY AREA. IT IS ALSO HOME TO SOME OF THE BEST LOCAL SEAFOOD AND ARTISAN CHEESES—ALL WITHIN A STONE'S THROW FROM THE BAY'S EMERALD WATERS.**

---



Take a tour of **Hog Island Oyster Co.** mariculture farm (reservations required) or pick up a sack of their sustainably-raised oysters at the **Hog Shack**, their retail outlet. Their products are also available down the road at **Tony's Seafood**, if you're looking for a restaurant on the waterfront. **Nick's Cove** and the **Marshall Store** are other great options if you have a hankering for seafood.



A visit to this corner of Marin County isn't complete without a stop at the **Point Reyes Farmstead Cheese Co.**—one of the region's most-awarded artisan cheese producers. Come for the cheese, stay for an education on sustainable dairying and climate-friendly agriculture.



Because the easy trails at **Millerton Point** are often overlooked for the nearby trails in the national seashore, you'll find them less crowded. Pack a picnic and plan an afternoon by the water at **Alan Sieroty Beach**, named in honor of the late state senator who helped form the California State Coastal Commission.



## READY FOR THE NEXT TRAIL?

Grab our hiking guide: [malt.org/hiking-guide](https://malt.org/hiking-guide)





## Discover HICKS VALLEY

*Hicks Valley* IS THE SPOT IF YOU'RE LOOKING FOR A CLASSIC WEST MARIN EXPERIENCE RICH IN AGRICULTURAL HERITAGE. GET OFF THE BEATEN PATH AND EXPLORE A UNIQUE CORNER OF THE BAY AREA'S LOCAL FOOD SCENE.



In the center of it all lies **Marin French Cheese Co.**, the longest continuously operating cheese company in the country. You'll find an assortment of handmade artisan cheese, including many from the region's local producers. Stay for lunch and picnic by the pond.



Just up the road is **Hicks Mountain Hens** and the **Tenfold Farm Stand**, two roadside stands with pasture-raised eggs, honey, and butter (former) and fresh veggies, pastries, breads, and cut flowers (latter). These honor system-based businesses have become destinations for locals and travelers alike.



**Stafford Lake** is also nearby and offers sweeping views of the surrounding open spaces, much of which is MALT-protected land. There's an epic **bike park** and ample paved trails for the cyclists in the family. And across the street, the **Grossi Family** offers one of the best pumpkin patches in the North Bay each fall—plan a visit!



If you're looking for a challenging hike, the dog-friendly **Indian Tree Open Space Preserve** isn't far. The preserve's **Big Trees Trail** lives up to its name, ascending through thick stands of redwoods for a 3.8 mile loop with sweeping views, ending in a stand of old growth redwood. It's worth the effort.

## HUNGRY FOR MORE LOCAL FOODS?

Find our Buy Local guide: [malt.org/buy-local](https://malt.org/buy-local)





## *Time travel in* **NICASIO VALLEY**

---

*Nicasio Valley* MIGHT BE YOUR BEST SHOT AT TIME TRAVEL. ALTHOUGH IT'S LESS THAN 30 MILES FROM THE HUSTLE OF SAN FRANCISCO, THIS SMALL TOWN FEELS STUCK IN THE LATE 19TH CENTURY, WITH A BUCOLIC CHARM AND NATURAL BEAUTY NOT FOUND ANYWHERE BUT MARIN COUNTY.

---



The **Nicasio Valley Cheese Co.** is a local institution and a visit to their shop is a must to sample their award-winning cheese and learn about the family's legacy of land stewardship. The ranch also hosts a pumpkin patch in the fall with activities for the whole family.



The best place for a bite nearby is **Rancho Nicasio**, with offerings from MALT-protected **Stemple Creek Ranch** and **Tomales Bay Oyster Company**. And if you time it right, you'll be able to catch some live music too. From here, you're a short walk to the iconically photogenic **Old Saint Mary's Church**.



The nearby MALT-protected **Cowtrack Ranch** has been in the family for generations and is one of the few women-owned and operated ranches in the area. Some of their homegrown beef, honey, garden soaps, cooking salts, and eggs can be found at the **Nicasio Valley Cheese** and **Marin French Cheese Co.** shops, so keep an eye out.



For intrepid hikers, a scramble up the MALT-protected **Big Rock Ridge** should rank high on the list of to dos, part of the larger dog-friendly **Lucas Valley Open Space Preserve**. Climb to the summit, the second highest in Marin.

## READY TO GO BIG?

Learn what it takes to buy a whole cow: [malt.org/buy-a-cow](https://malt.org/buy-a-cow)





Post Office Box 809  
Point Reyes Station  
California 94956

RETURN SERVICE REQUESTED

NONPROFIT ORG  
US POSTAGE  
**PAID**  
OAKLAND, CA  
PERMIT NO. 379



## About **MALT**

Founded through an unlikely partnership between the environmental and ranching communities, the Marin Agricultural Land Trust (MALT) was the first land trust in the nation focused specifically on preserving local farmland. Since its founding, the organization has helped safeguard over 58,500 acres of working and natural lands in Marin County.

**DISCOVER MORE: [MALT.ORG](http://MALT.ORG)**

Photos: Matt Dolikas, Isabel French, Paige Green, Jeff Lewis, and Maggie Sowell.  
Design: [shirleycreative.com](http://shirleycreative.com)